

# BERLEYPRO

## PROPEL POWER PACK



## INSTALLATION MANUAL

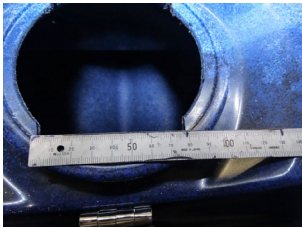
**BP605**

**By installing this rudder you accept BerleyPro is not responsible for any warranty or failures on the existing steering components and hull.**

This manual is to be used as a guide only. BerleyPro is not responsible for any damage or incidents that can occur during the installation or incorrect use of incorrectly assembled components. The information in this manual is strictly property of BerleyPro and can be changed at any time without notice. BerleyPro reserves the rights to change designs, materials and prices without notice. BerleyPro does not take any responsibility for manufacturers hull warranties.

## INSTALLATION INSTRUCTIONS

Remove the existing rubber cover and storage bucket. The top ring now needs to be cut to allow for the new battery mount to sit as shown. Use a ruller to ensure your cuts are straight. The cuts should only be on the inner ring and not touching the side walls of the round exrtusiong as shown. Cut a small section and sit the lower part of the mount in untill it fits.



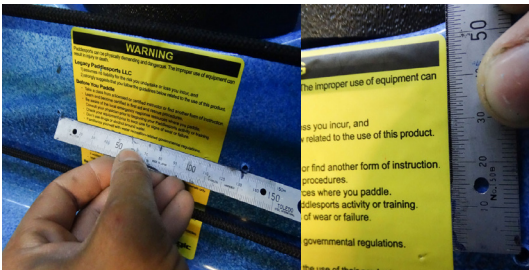
1

Drill 2 5mm holes on the rear face as shown when the lid is sitting on top and the hinge is laying evenly as shown. Bolt the hatch on using the two M5 screws and nuts provided.



2

Install the two screws in the elastic cord ends 50mm down from the top and evenly at 130mm apart as shown.



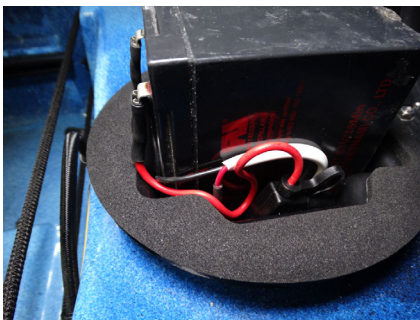
3

To run wires to the front of the kayak you can drill a 12mm hole through the side of the casing. Use the cable gland provided and run your cable. Tighten the gland on the cable first and then once the mount is installed pull the cable back through and tighten the nut on the rear.



4

The side compamtments can be used to hold the excess wiring and fuse holders as shown.



5

The sides of the lid can also be used to mount RailBlaza E Ports or Starports to hold small accesories.



6